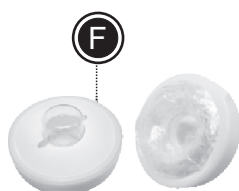


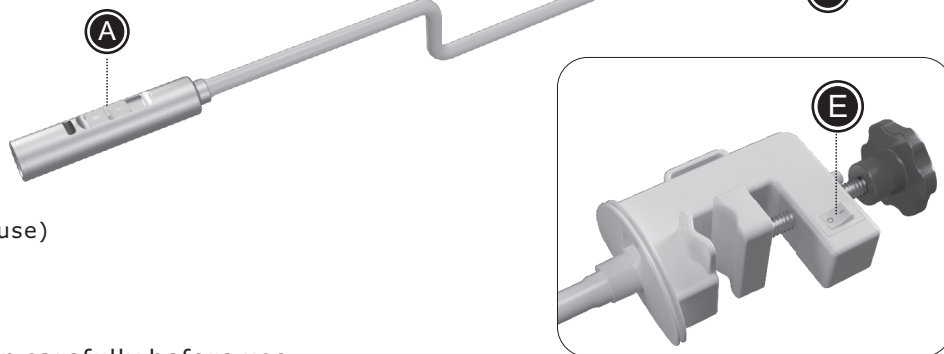
REF LS 2000-14


General Description

The MOBILE LITE is a non-invasive assistive surgical illuminator. It features a bright, single LED that provides an intensive light source and consumes less energy for improved facility efficiency. Highly flexible according to the required angles. Use in combination with Protective Sleeve to provide a sterile barrier in the surgical field.



Sterilized Protective Sleeve (Single use)
LS2000-14-PS / Optional



 Read the operating instruction carefully before use. Failure to follow may cause damage or injuries.

Warnings

Failure to follow may cause harm to person.

- This product is not recommended for direct contact with patient's surgical site.
- DO NOT operate damaged or malfunctioning instrument.
- Reusable device!

Caution

Failure to follow may cause damage to product.

- DO NOT drop or hit the instrument.
- Store in a cool dry place.
- No modification of this equipment is allowed.
- Do not use other types of AC adaptor or battery pack.
- Do not autoclave.



Indications

Provide visible illumination of the surgical field or the patient.


Contraindications

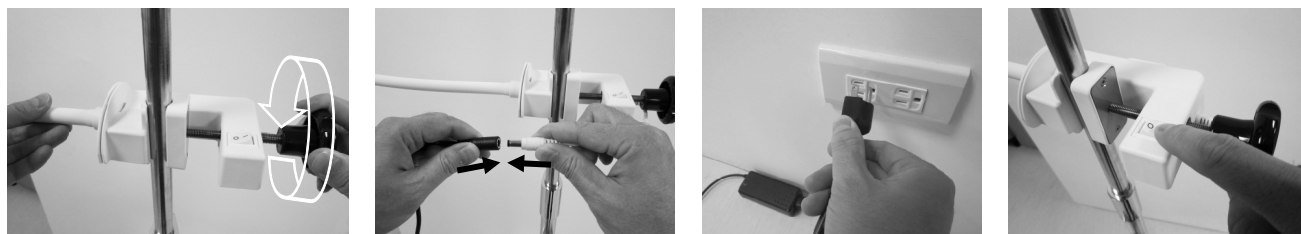
Non-invasive assistive surgical illuminator

Instructions for Use

1. Circulating Personnel tighten the screw lock and make sure it is securely clamped to the trolley / I.V. pole  .

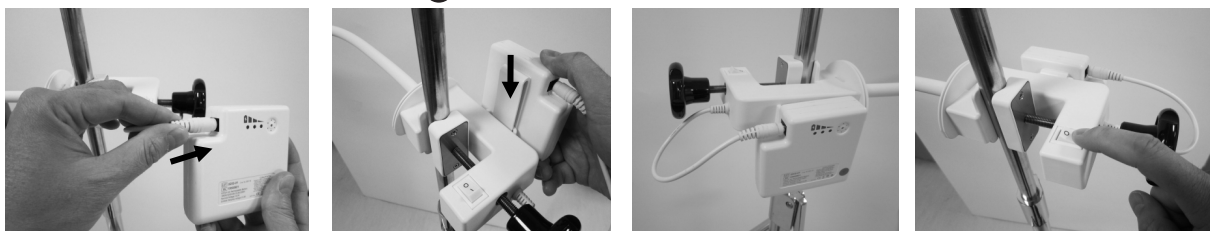
Use AC power source

2. Circulating Personnel connect the cord  to the AC adaptor output plug and ensure it's secured. Turn ON the switch .

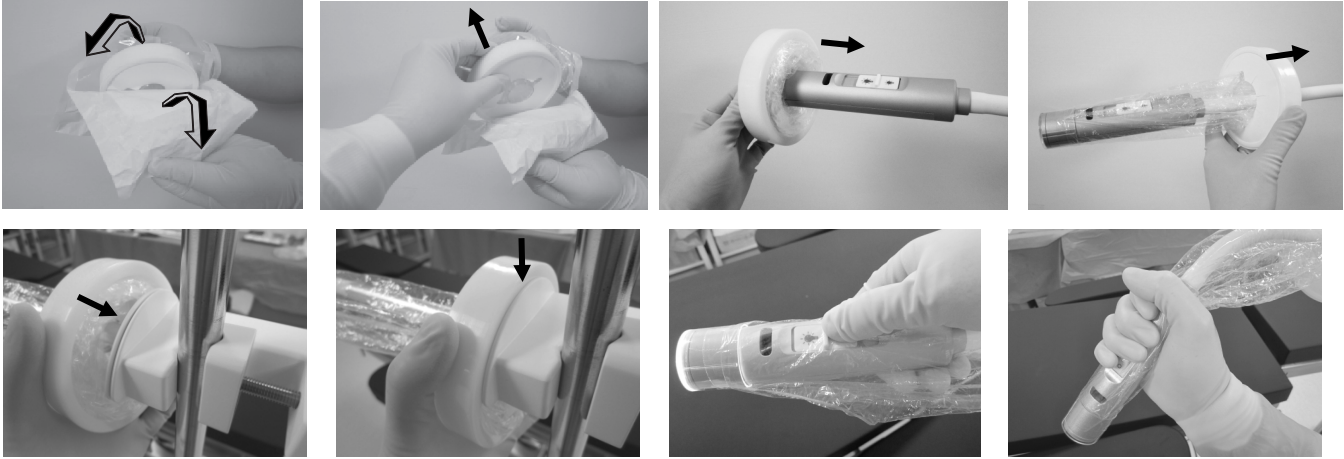


Use Battery pack

- Circulating Personnel connect the cord  to the battery pack jack socket and hand it on the clamp. Turn ON the switch .



3. Peel open the package and remove protective sleeve in a sterile way (F).
4. Sterile person attaches the lens of protective sleeve to the light head and pushes through the light tube until it reaches the clamp (F).
5. Slide the switch to adjust brightness (A).
6. Hold the light head to adjust angle.



Cleaning

- ALWAYS power OFF the device and unplug the power source before cleaning.
- Device can be cleaned with neutral disinfectant wipe.
- DO NOT wash the device or hold under running water.

Disposal

- Dispose protective sleeve as appropriate, immediately after use.
- Ensure that the device is disposed of safely and in accordance with all current national and international waste disposal directives.



Please dispose of the device in accordance with EC Directive – WEEE (Waste Electrical and Electronic Equipment).

Transportation and Storage

- Temperature: -25°~70°C
- Relative Humidity: 10%~95%RH maximum
- Atmospheric Pressure: 860hPa~1060hPa

Operation

- Operating temperature: 5°~25°C
- Relative Humidity: 15%~85%RH maximum
- Atmospheric Pressure : 860hPa~1060hPa

Specification

- Power: DC \equiv 12V // 300 mA
- Light intensity (at 30cm): 60,000 Lux (without protective sleeve)
- Typical color temperature : 5000K
- Color rendering index (CRI) : 90
- Length of tube : 800 mm (with light head)

Labeling Symbols

	General warning sign / Caution
	Keep dry
	Temperature limit
	Catalog number
	Batch code
	Serial number
	Complies with EU directives
	Date of manufacture
	Manufacturer
	Authorized representative in the European Community
	Type B applied part
	Direct current
	European Union WEEE Directive Logo
	Consult instructions for use
	Medical Device



MedNet EC-REP GmbH
Borkstrasse 10, 48163 Muenster,
Germany.



Dongguan Kaiser Technology Co.,Ltd.
No.6, 2nd Road, Sanjiang Industrial Block,
Hengli Town, Dongguan City, 523462
Guangdong P.R.China